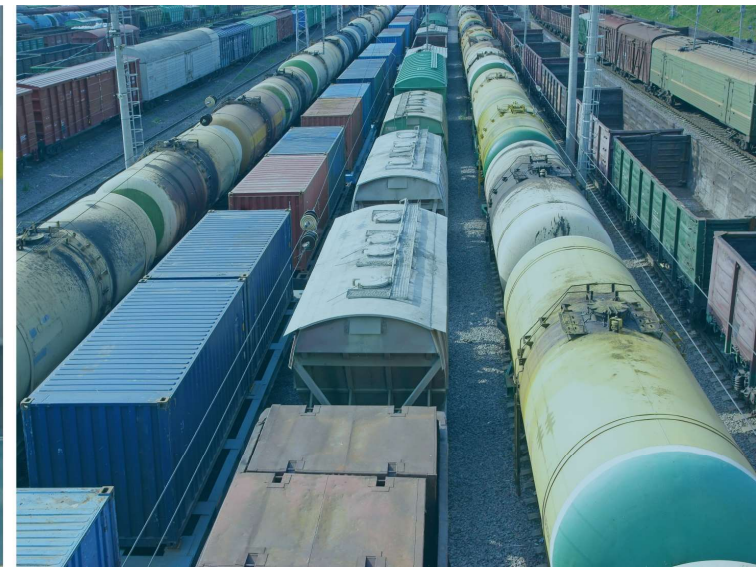
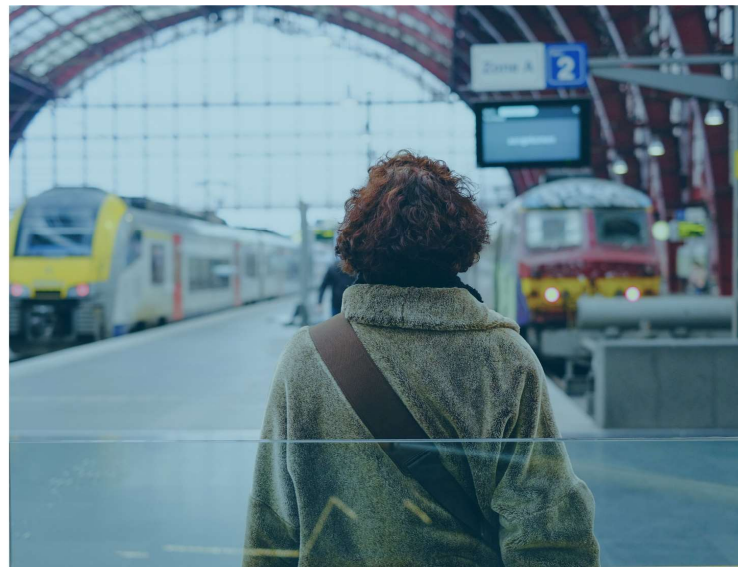




DG DUURZAME MOBILITEIT EN SPOORBELEID
DG POLITIQUE DE MOBILITÉ DURABLE ET FERROVIAIRE



“As Is” Federal subsidy scheme

WG 3 Support Mechanisms – 24/09/2020



Background & figures

Overview

- ✓ Level playing field
- ✓ Financial support = cost effectiveness
- ✓ Direct grant

259.930.000 EUR
(2019)





Background & figures

Combined transport

- ✓ Since 2005
- ✓ Extra costs: handlings in terminals, short distances...

4.222.594 ITU



192.532.000 EUR
(2019)

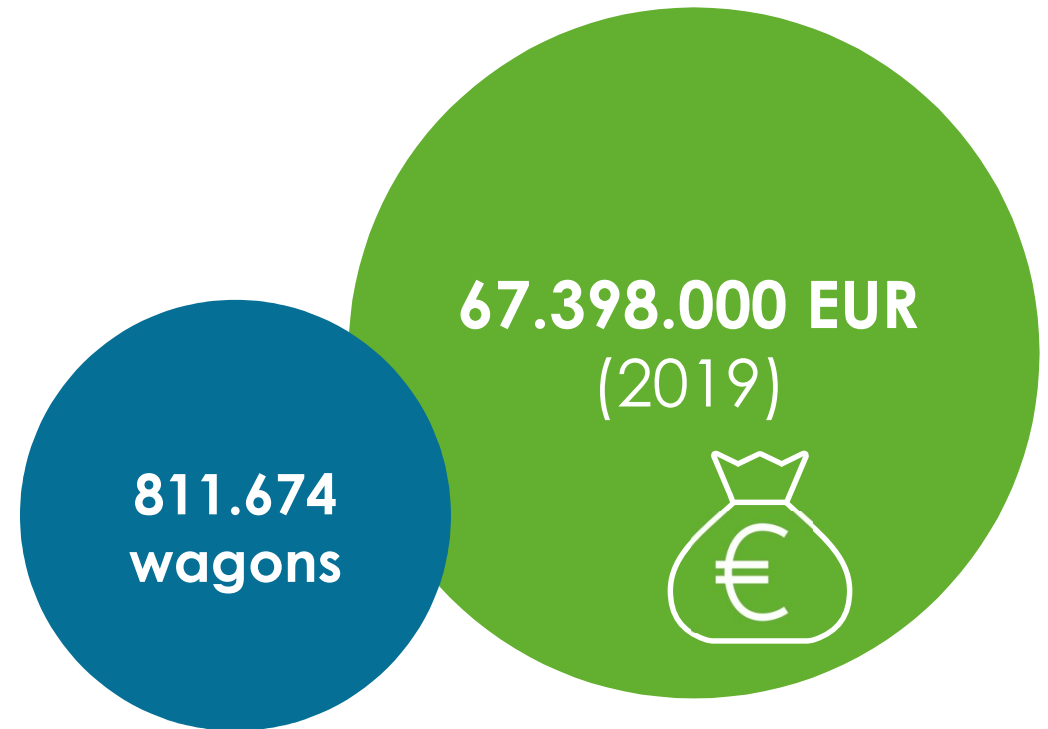




Background & figures

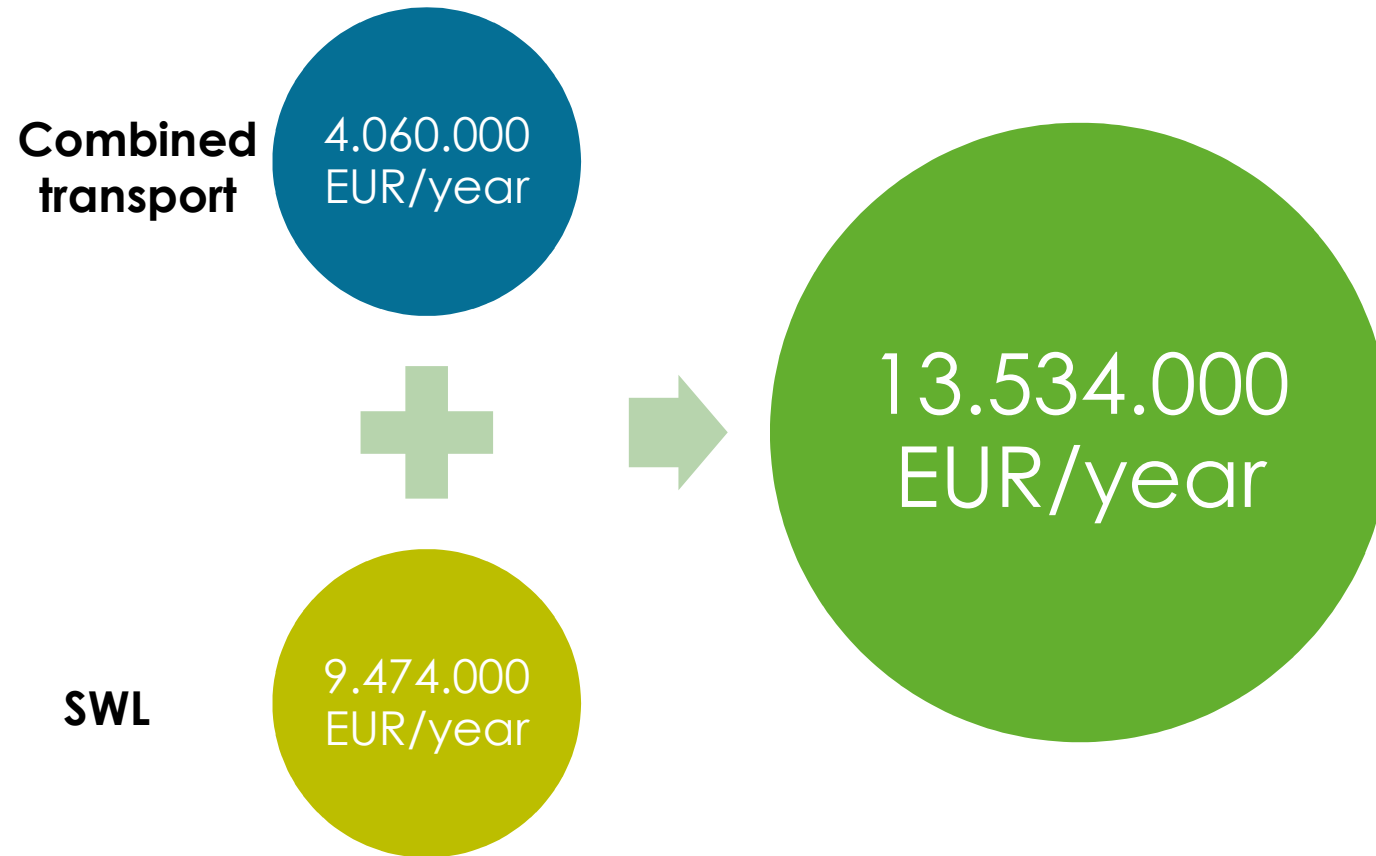
Single wagon load

- ✓ Since 2013
- ✓ Extra costs: first/last mile, staff, shunting locomotives...





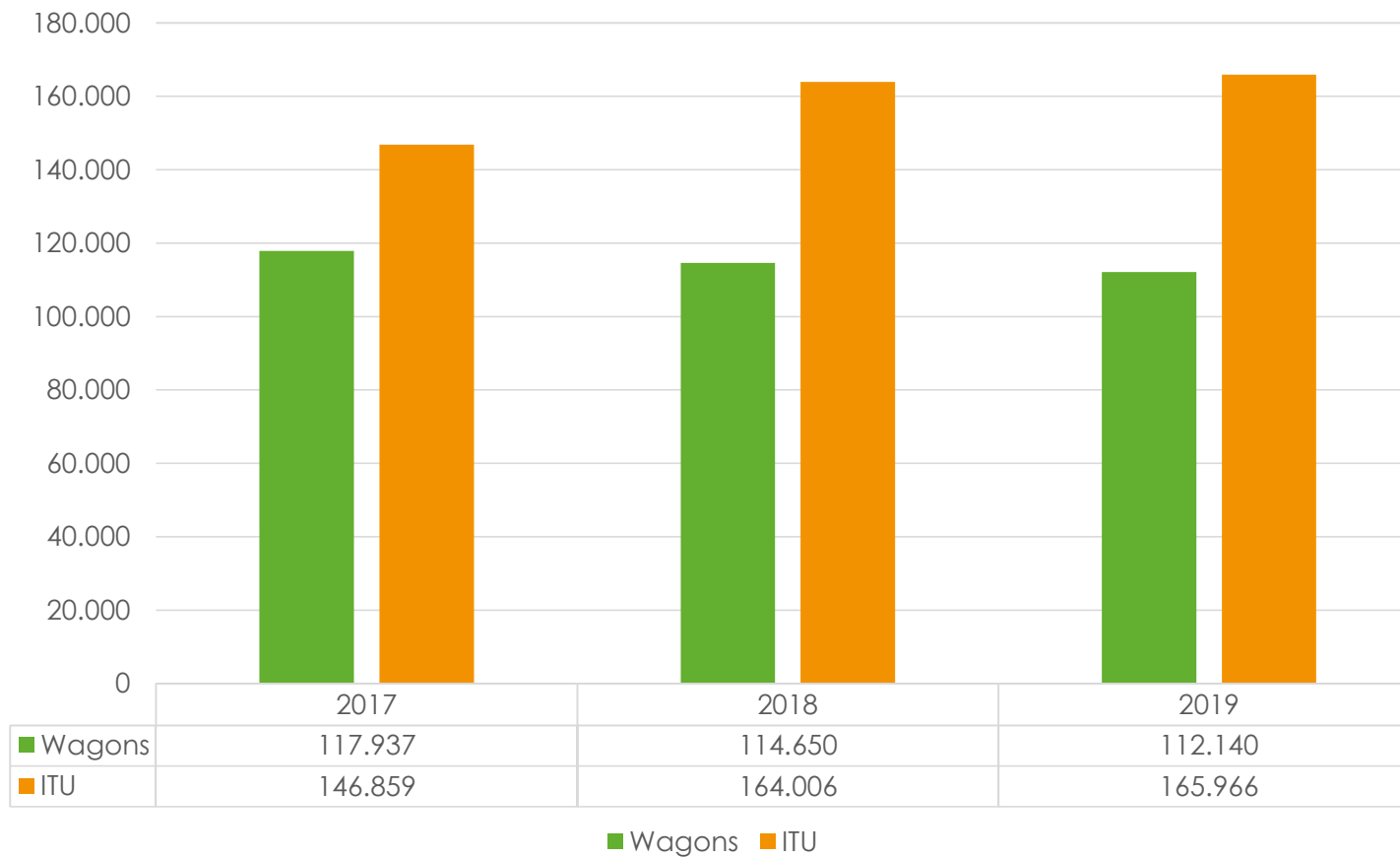
Scheme 2017/2020 – Key facts





Scheme 2017/2020 – Key facts

Evolution volumes





Scheme 2017/2020 – Key facts

- ✓ Prolongation for the period 01/01/2021 to 31/12/2021
(COM decision 11/09/2020 - SA.57556)





Scheme 2017/2020 – Principles

Framework

Community guidelines on State aid for railway undertakings (2008/C 184/07)

Eligible costs

Necessity and proportionality of the aid (30 % of the total cost of rail transport)

Program law of 22 December 2008, as amended by the law of 5 May 2017

SWL

Royal Decree of 15 July 2009, as amended by the law of 5 May 2017

Combined transport

Principles

Fixed annual budget

Beneficiaries: “who bears the financial burden”



Scheme 2017/2020 – principles (cont.)

Single wagon load

Beneficiaries: intermodal operators

Grant/kilometer in Belgium – 0,57 EUR/km

Grant/wagon

Grants conditions

Consignment letter

Only one grant/wagon => single application

Grants allocated/quarter, at any time

Max. 25 % annual budget/quarter

Threshold 30% eligible costs (see Community guidelines)

Year	EUR/wagon
2017	€ 80,32
2018	€ 82,63
2019	€ 84,48



Scheme 2017/2020 – principles (cont.)

Combined transport

Beneficiaries: railway undertakings

Inland ITU transport

Between two transshipments facilities or
two nodal points in Belgium

> 51 km

ITU bundling with international links

Grant according to the formula

$$([\text{€/km}] \times \text{ITU Km}) + [\text{fixed rate for handling}]$$

Year	EUR/ITU
2017	€ 27,65
2018	€ 24,76
2019	€ 24,46



Scheme 2017/2020 – principles (cont.)

ITU transport between ports

Block trains

> 51 km

Grant according to the formula

$$([\text{€/km}^*] \times \text{ITU Km}) + [\text{fixed rate for handling}^*]$$

(*different amount than inland ITU transport)

Grants allocated/quarter, at any time

Max. 25 % annual budget/quarter > prorata for the remain of the year

Threshold 30% eligible costs (see Community guidelines)



Scheme 2017/2020 – principles (cont.)

Competition with inland waterways (combined transport)

Advisory committee (Federal & regions)

Prevents distortion of competition

Mechanism

50% of the grant if the awarded service causes no diversion of existing inland WW offer

No grant if there is a diversion of existing inland WW offer





Questions to the floor

We are happy to hear about

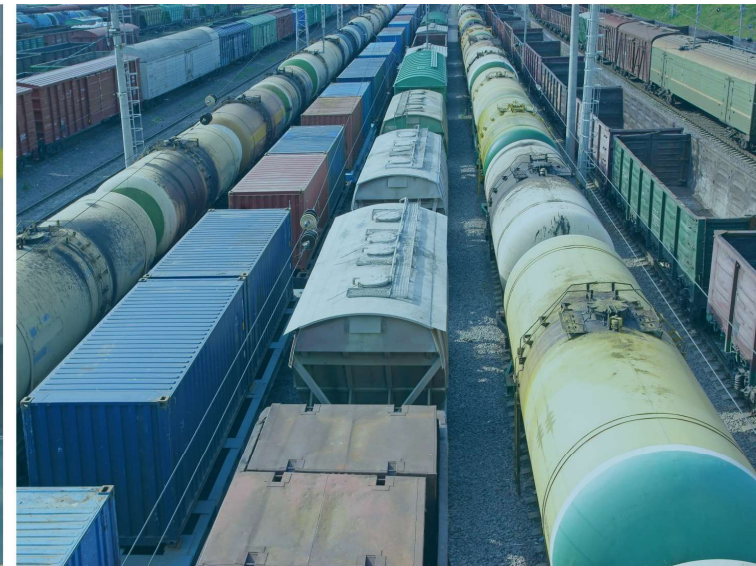
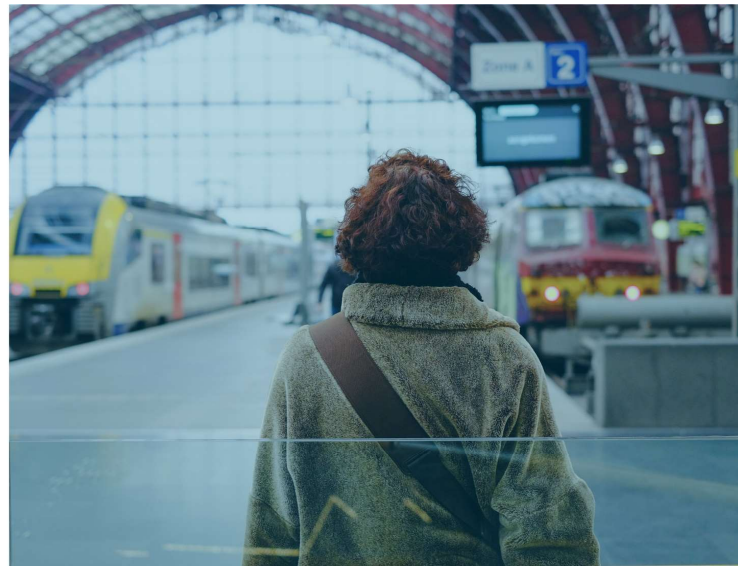
your experience with the current scheme and abroad?

your expectations toward a new scheme?





DG DUURZAME MOBILITEIT EN SPOORBELEID
DG POLITIQUE DE MOBILITÉ DURABLE ET FERROVIAIRE



Thank you for your attention



| www.mobilit.belgium.be

.be